

62.17

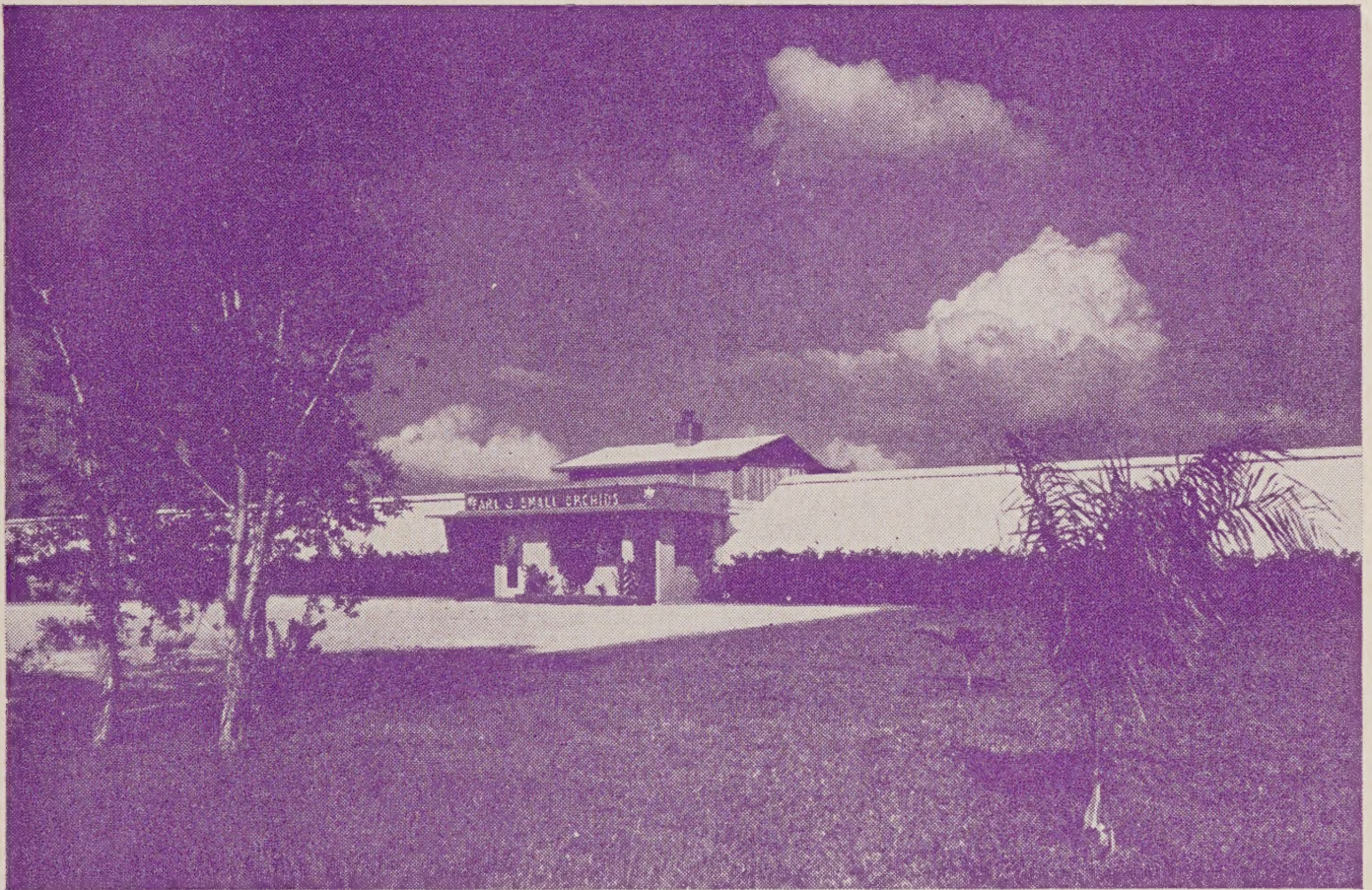
1954

Or

LIBRARY  
RECEIVED  
★ AUG 16 1954 ★  
U. S. Department of Agriculture

# Orchids for All

By Earl J. Small



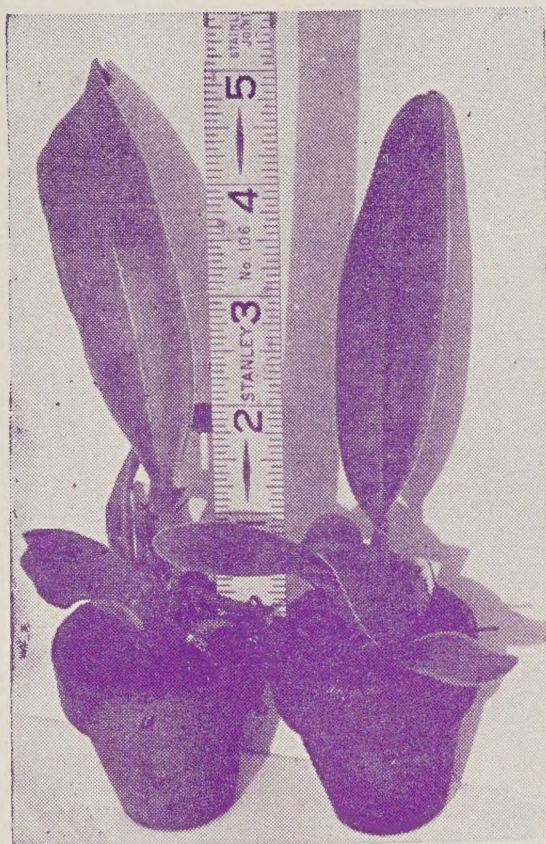
*Above is a front view of the Earl J. Small Orchids' main office and greenhouses located at 49th Street and 70th Avenue North, St. Petersburg, Florida (Pinellas Park)*

## EARL J. SMALL ORCHIDS

P. O. BOX 576 . . . . . 22nd ST. STATION

*St. Petersburg, Florida*





**Seedlings in 1 3/4" Pots**

*All are large plants for the size of the pot; they should be planted in 2 1/2" pots. Averaging five inches high they should flower in about three years.*



**Seedlings in 3 1/2" Pots**

*These are very large, nearly mature seedlings ready for 5" pots when delivered. Many will flower within a year.*

**Seedlings in 2 1/2" Pots**

*We think this is the best offer in our catalog! These are large plants averaging 8" to 10" in height and are ready for 3 1/2" or 4" pots . . . Expected to flower in less than two years.*





# UNFLOWERED CATTLEYA SEEDLINGS

CROSS NUMBER		POT SIZE	PRICE PER PLANT
2	<b>LC. FLORADORA (Lc. Eminence "Variety Outstanding" X C. Amabilis)</b> Fine rich lavender flowers. The largest of these are beginning to flower and indicate heavy production with 3 to 6 well formed flowers on a spike. Season is expected to be Fall and Winter with some indication of blooming several times a year. Very strong growers.	2 1/2" 3 1/2" 5"	\$ 2.50 5.00 7.50
5	<b>C. PEARL (C. Bobbie Jewell X C. Blanchley's)</b> This cross will produce a very fine, pure white with a nice touch of yellow in the throat. Texture and size will be good. It is expected to flower from September on into the Winter.	2 1/2" 3 1/2"	3.50 10.00
6	<b>LC. MEMORIA DANIEL CASWELL (Lc. Tridon XC. Annie J. Lines)</b> This is a mating between two very fine flowers. Lc. Tridon is a large flower with a very brilliant yellow eyes set in a large dark lip. The other parent, C. Annie J. Lines is known by everyone for its beautiful very dark almost fuchsia purple flowers. The cross was made in January and season is expected to be mainly Winter but with the possibility of flowering twice a year as both parents usually do (Limited quantity)	3 1/2"	10.00
13	<b>C. ALTADENA, FINE VARIETY X C. AMABILIS</b> Very heavy production of large flowers having dark lips. Season is late Fall — vigorous grower.	3 1/2"	7.50
14	<b>C. JESSICA DRAGONETTE (C. Intertexta "Juliettiae" XC. Barbara Billingsley)</b> A very free blooming pure white for the Christmas and MidWinter Season. Exceptional growth habit. Sepals and petals are paper white with a slight touch of lemon yellow in the throat. (Limited Quantity).	5"	12.50
21	<b>LC. ELIZABETH LIND X C. TRIANAE "Baldwin Hybrid Strain"</b> Large well colored flowers for November and December — Free Flowering.	1 3/4"	1.75
42	<b>BLC. CALIGULA "Variety Excelsia" X LC. HELEN WILMER</b> Only finest quality exhibition flowers can come from this cross. Blc. Caligula Var. Excelsia is very large, richly colored and extremely well shaped. Lc. Helen Wilmer is also very large, has petals almost as wide as they are long and is exceptionally dark. Texture is excellent and season should be Winter and Spring.	2 1/2"	3.50
46	<b>LC. FLORENCE PICKARD X LC. CANTRA ALBA.</b> Two very fine white colored lip parents were used in this attempt to produce a fine new white for the month of September. Lc. Cantara is characterized by an extremely large reddish-purple lip, while Lc. Florence Pickard was selected for its extremely large sized sepals and petals and heavy producing qualities. Both flower in September. (Limited Quantity).	2 1/2"	3.50
49	<b>C. FLORENCE PATTERSON X LC. LUMINOSA AUREA</b> This cross between a pure white and a yellow with purple lip is unusual. The first two plants flowered this June and were a bronze tinted lavender color.	2 1/2" 3 1/2"	2.50 5.00
78	<b>C. LABIATA ALBA X LC. NEW YORK ALBA</b> Nice flower with clear white sepals and petals and a purple lip. These plants are very strong growers and Season is expected to be Fall.	1 3/4"	1.75
82	<b>LC. PRINCESS PRUDENCE X LC. SOUTH ESK.</b> A very fine hybrid of excellent quality and size. Lc. Princess Prudence is richly colored and a mating with Lc. South Esk should produce very choice flowers for Winter.	1 3/4" 2 1/2"	1.50 3.00



CROSS NUMBER		POT SIZE	PRICE PER PLANT
84	<b>BLC. DAWN ANGELA X POTINARA RED FRIAR</b> A hybrid with prospects of new dark shades should come from this quadrogenic cross. Season will probably be variable and the flowers will have excellent texture.	13/4"	1.75
88	<b>C. JESSICA DRAGONETTE (C. Intertexta Juliettae X C. Barbara Billingsley)</b> A very free blooming pure white for the Christmas and Mid-Winter Season. Exceptional growth habit. Sepals and petals are paper white with a slight touch of lemon yellow in the throat	13/4" 2 1/2"	1.50 3.00
93	<b>C. BARBARA BILLINGSLEY X C. CLEMENTINE GOLDFARB "Osmer's Variety"</b> A large pure white of extremely free blooming characteristics will come from this hybridization. Both parents are very floriferous. Season will probably be variable with several spikes per year.	13/4"	1.75
99	<b>C. HELEN DURFEE X C. FRANCES CARLSON</b> Another fine pure white — only this one was made to fill the demand for September weddings. Both parents flower at the same time, and very large flowers of good shape and texture will be freely produced.	13/4"	1.75
100	<b>C. BOW BELLS #20 X C. CLEMENTINE GOLDFARB "Osmer's Var."</b> By mating C. Bow Bells with the famous C. Clementine Goldfarb "Osmer's Var." we expect a profusion of large well balanced flowers on a non-seasonal basis.	13/4"	2.00
103	<b>C. BELGICA A.M., A.O.S. X LC. PRINCESS MARGARET #2</b> Prize winning flowers for Exhibition was the aim in this hybrid. Both parents produce top quality flowers. Season will be variable.	13/4"	2.00
105	<b>LC. ALTESSE "Dark Late Variety" X LC. PRINCESS MARGARET #2</b> This will be the best "all around" hybrid ever produced. Both parents are proven breeders of quality and both flower at least twice a year. This particular cross was made in December, with both flowers in bloom at the same time. In our opinion, these plants will excell the famous cross of Lc. George E. Baldwin with both production and quality of flowers.	13/4"	1.75
106	<b>C. HENRIETTA JAPHET "Var. The Bride" X C. BARBARA BILLINGSLEY "Var. E. J. Small, A.M., A.O.S."</b> Exceptional productivity, texture, and quality in medium sized pure white flowers will come from these seedlings. C. Henrietta Japhet is famous for its spikes of 5 to 7 small but heavy textured flowers, that are produced on each new growth 2 to 3 times a year. The Barbara Billingsley Var. E. J. Small. A.M., A.O.S. used in this cross, produces very large flowers of exceedingly good shape and texture and has won numerous first prizes in orchid shows. It has never failed to win each time it was exhibited and just recently won the title of "Best Pure White" at the "Sixth Florida West Coast Orchid Show."	13/4"	1.75
109	<b>LC. WALTER WINCHELL X LC. JOSEPH HAMPTON</b> Mid-Winter flowering Exhibition hybrids. Both parents have very rich dark colors and excellent form.	13/4"	1.75
113	<b>LC. PRINCESS MARGARET #2 X LC. ALTESSE "Dark Late Variety"</b> A reverse cross using the same parent plants as our #105. Both crosses are very vigorous.	13/4"	1.75
142	<b>LC. APRICOSA X LC. HENRIETTA P. DANE</b> Little description is needed when we say these seedlings will produce some of the finest yellow orchids ever grown. (Limited Quantity)	13/4"	2.00



CROSS NUMBER		POT SIZE	PRICE PER PLANT
143	<b>BLC. SANTURANO X LC. NUGGET</b> Another attempt at making a good yellow hybrid. (Limited Quantity).	1 3/4"	2.00
144	<b>LC. SOUTH ESK. X. LC. PRINCESS MARGARET</b> These vigorous little seedlings are expected to make exhibition size flowers of very fine quality. Season should be variable.	1 3/4"	1.75
145	<b>LC. CATHERINE GRAY X LC. HENRIETTA P. DANE</b> Yellow to bronze flowers with vigorous production are expected from these plants.	1 3/4"	2.00
146	<b>C. BOW BELLS X (C. Emily Shill X C. Lady Veitch)</b> C. Bow Bells needs no description as it has won more prizes than any other orchid ever raised, however, the other parent in this cross is equally as fine if not as well known. It flowers in May and June — just right for weddings and graduations.	1 3/4"	2.00
163	<b>LC. MAX PALM X C. FABIA</b> A few of these seedlings have flowered and they are outstanding. The bloom are large, richly colored dark lavender and form is very good. Flower in June. (Limited Quantity).	3 1/2"	10.00
167	<b>C. HARBINGER (C. Enid X C. Tityus)</b> A fine, free flowering hybrid. Color will be rich lavender and a dark lip. Season will be variable; plants will flower several times a year.	3 1/2" 5"	5.00 7.50
171	<b>C. TRIUMPH X LC. JACQUINETTA</b> This cross has produced very fine flowers with rather unusual shades of lavender — some with tints of almost a blue-lavender. Shape and texture are both excellent.	3 1/2"	7.50
247	<b>LC. PRINCESS ISHTAR "Var. Hawaiian Queen" X BC. PRINCESS PATRICIA</b> A cross between two very fine large hybrids. Rich lavender sepals and petals and a large very dark lip. Flowering period should be Winter.	2 1/2"	3.50
255	<b>C. ALWYNII "Var. Jane Froman" X LC. HASSALII ALBA "Cowan's Var." F.C.C.</b> A most outstanding white with contrasting rich dark lip. Season should be Winter and Spring.	2 1/2"	3.50
270	<b>LC. AVIGNON "Var. Flora" X C. DINAH "A.M."</b> Large dark Exhibition hybrids for prize winning results, are expected to flower in May from this cross.	2 1/2"	3.50
281	<b>LC. LINNAEUS T. SAVAGE X C. GLORIETTE "Var. Superba"</b> Right from the flask, this cross has proven the results of an excellent mating by its unusually strong growth habit. Little needs to be said on behalf of C. Gloriette "Var. Superba" whose flowers are world-renown for their beauty, size and shape. Breeding this fine Lc. Linnaeus T. Savage will produce an excellent new hybrid of extremely rich colors for the Winter Season.	1 3/4" 2 1/2" 3 1/2"	1.75 3.50 7.00
295	<b>LC. ALTEN X C. TITRIANAE "Very Fine Variety"</b> Lc. Alten is one of our finest Winter hybrids. Its flowers are always large, heavy textured and usually borne 4 to 6 on the spike. By mating it with this particular C. Titrianae we expect an even greater new Winter flowering hybrid.	1 3/4" 2 1/2" 3 1/2"	1.75 3.50 7.00
299	<b>LC. VALIANDINA X LC. GLORIA</b> Both of these flowers are very large and dark. The seedlings are quite vigorous and should produce an excellent new hybrid for Winter production.	2 1/2"	3.50



CROSS NUMBER		POT SIZE	PRICE PER PLANT
307	<b>C. TRIUMPH X LC. GLORIA</b> C. Triumph is a very dark, heavy textured flower. By mating it with Lc. Gloria, we expect a profusion of large, very dark hybrids for Winter and Spring.	1 3/4" 2 1/2"	1.75 3.50
308	<b>C. TITRIANAE X LC. PRINCESS PRUDENCE</b> Choice winter flowers of excellent form and long lasting qualities, will come from the sheaths of these seedlings.	1 3/4" 2 1/2"	1.75 3.50
321	<b>BC. MRS. ROBERT PATTERSON X C. TRIANAE</b> Fine large flowers during Winter holidays was the intention here. These are vigorous little seedlings and production is expected to be good.	1 3/4" 2 1/2"	1.75 3.50
335	<b>BC. WENDOVER (Bc. Princess Patricia, F.C.C., A.O. S. X. C. Trianae "Var. Joy)</b> Thé Brasso in this cross is one of the finest we have ever seen. Mating with C. Trianae "Var. Joy" can not fail to produce good Winter bloom of exhibition size.	1 3/4"	1.75
342	<b>LC. MAX J. PALM X LC. DERRYNANE</b> Lc. Max J. Palm is a large dark flower of excellent form. Breeding it with this dark variety of Lc. Derrynane will not fail to make one of the finest hybrids for exhibition.	1 3/4" 2 1/2"	1.50 3.00
347	<b>LC. THURGOODIANA X LC. PAGE PLATT</b> First blooming of this cross indicates good flowers with clear yellow to cream colored sepals and petals set off by a rich red-purple lip. Flowering Season is late Spring and early Summer.	3 1/2"	12.50
358	<b>C. FRANCES ELAINE (C. Enid X C. Gloriette)</b> This new hybrid has already proven itself to be a very heavy producer for Fall and Winter. Even some of the plants in 3 1/2 inch pots have put on as many as three large flowers. They are characterized by large richly colored sepals and petals, set off by a dark contrasting lip of velvety purple, sometimes further enhanced by a rich yellow throat.	3 1/2" 5" 6"	5.00 7.50 10.00
414	<b>BC. MRS. ROBERT PATTERSON X C. BELGICA "Var. Robert Doig"</b> Extremely large flowers of superb form and color during Mid-Winter. The lip should be extra large and richly colored.	2 1/2"	3.50
435	<b>C. MAGGIE RAPHAEL (C. Trianae "Baldwin Hybrid Strain" X C. Dowiana Aurea).</b> A remake of an old timer using two of the finest parents available. The cross is noted for its fine production of dark flowers in the Winter and always does its part in filling orders for Christmas orchids.	2 1/2" 3 1/2" 5"	2.50 5.00 7.50
452	<b>LC. GEORGE E. BALDWIN (C. Enid X Lc. Princess Margaret)</b> A recrossing of this famous hybrid by Mr. George E. Baldwin, using parents of his own selection. It can't fail to be good. Season will, of course, be Spring and variable with more than one set of flowers per year.	3 1/2"	10.00
543	<b>C. ALICE PEARCE "Reineckiana" (Young's var.) X C. Princess Royale Alba.</b> A very nice white with rich purple lip. Some plants have had purple extend up into the entire tube of the labellum and were quite showy. Season is Winter.	3 1/2" 5"	8.00 12.50
554	<b>LC. AMERICAN SECURITY (C. Royana X Lc. Princess Margaret)</b> A very richly colored lavender that flowers during late Spring and sometimes again in the Fall. Size, shape and color are all excellent.	3 1/2" 5"	8.00 15.00



CROSS NUMBER		POT SIZE	PRICE PER PLANT
558	<b>CATTLEYA BING CROSBY (C. Royana X C. R. Cadwalader)</b> May and June, the months of weddings and graduations are hit squarely by this fine, very dark hybrid. The strong growing habit of this plant makes it a favorite among orchid growers everywhere. Color is extremely dark, the lips of some being marked with brilliant yellow.	5"	12.50
		6"	15.00
564	<b>LC. ARTHUR E. MILES (Lc. Sagana "Var. Easter X C. Mossiae "R.E.P.")</b> These are producers of extremely large flowers of good rich lavender color and nice heavy texture. Season is April, May and June.	5"	15.00
577	<b>LC. GEORGE E. BALDWIN (C. Enid "Var. Orchidhaven" X Lc. Princess Margaret #2)</b> Another recrossing of this now famous hybrid using the finest of proven parents that can be had. A free producer of large well shaped blooms. Here in Florida, these plants produce a main crop of flowers in May and June with a secondary crop in September and on up until Christmas.	3 1/2"	10.00
		5"	15.00
		6"	20.00
565	<b>CATTLEYA ENID ALBA (Mossiae "Reieckiana" Young's Var. X C. Gigas "F.M.B.")</b> Large, White flowers with beautiful marked, colored lips are produced right in the middle of Winter by this dependable hybrid. Growth is exceptional, mature plants branching out rapidly to produce large multi-lead plants. The plants of this cross that have flowered as of this date have more than justified our high esteem of these seedlings. A great number of these flower more than once a year.	3 1/2"	8.00
		5"	12.50
		6"	17.50

## PHALAENOPSIS

71	<b>P. KATHERINE SIEGWART "Var. Helvetia" X P. CAST IRON MONARCH</b> These plants produce large pure white flowers of extremely heavy texture. Form is excellent.	3"	5.00
72	<b>P. KATHERINE SIEGWART "Var. Helvetia" X P. ALTADENA "Var. Pearl"</b> A cross between the large pure white P. Katherine Siegwart and a pale, blush P. Altadena with overlapping sepals and petals. These Seedlings have just begun to flower and the results are most gratifying. Nearly all flowers are pure white, heavy textured, and of excellent form.	3"	3.50
101	<b>P. DORIS X P. DORIS</b> A self cross of an extra large and nice pure white. Texture and shape are both good.	3"	3.50



## COMMUNITY SIZE SEEDLINGS 10 PLANTS \$3.75

The crosses listed below are available for immediate shipment as bare root Seedlings. They are sturdy selected plants, freshly removed from the Community Pot, packed for guaranteed safe arrival, and ready to be potted into 1 3/4" or 2" pots. (Minimum order is 10 plants of any one cross).

- 93 C. BARBARA BILLINGSLEY X C. CLEMANTINE GOLDFARB "Osmer's Variety"**  
a large pure white of extremely free blooming characteristics. Both parents are very floriferous. Season will be winter and variable with several spikes a year.
- 99 C. HELEN DURFEE X C. FRANCES CARLSON**  
A fine pure white for September weddings. Both parents flower at the same time, and very large flowers of good shape and texture will be freely produced.
- 106 C. HENRIETTA JAPHET "Var. The Bride" X C. BARBARA BILLINGSLEY "Var. E. J. Small" A. M., A. O. S.**  
High productivity, medium sized flowers, extra heavy texture, pure white, Season winter and variable.
- 105 LC. ALTESSE "Dark Late Variety" X LC. PRINCESS MARGARET #2**  
An excellent cross of proven parents. Both flower twice a year, usually in the spring and again in the fall. Dark rich colors, good form and texture.
- 113 LC. PRINCESS MARGARET #2 X LC. ALTESSE "Dark Late Variety"**  
Reverse cross of No. 105. Both are very vigorous.
- 132 C. ALESIA ALBA X LC. LOUELLA PARSONS**  
Nice white colored lip, season probably May and June with some secondary flowering again in late fall. Very free blooming. This cross is also available as a full 3" Community Pot of approximately 25-30 plants for \$6.00 per pot.
- 140 C. SARA COHN X LC. LUMINOSA AUREA**  
A cross of two richly colored yellows. Neither plant has ever produced an imperfect flower. Season late spring and variable. This cross also available as a full 3" Community Pot of approximately 20 - 25 plants for \$6.00 per pot.





## SPRAY TYPES

CROSS NUMBER		POT SIZE	PRICE PER PLANT
135	<b>D. PAULINE X D. PHALAENOPSIS SCHROEDERIANUM</b> Dixon Strain . The D. Pauline in this cross is almost constantly blooming the year around. By breeding with the famous Dixon strain of Den-phal, much improved color and shape can be expected and the everblooming qualities should be retained.	1 3/4"	1.25
104	<b>PHAIUS GRAVESIAE (Phaius Grandifolius X Phaius Wallichii)</b> A new crossing of a beautiful hybrid. The free blooming qualities of P. Grandifolius combined with the large, heavy textured flowers of P. Wallichii, has made a new large flower that is 5 inches or more across and holds its form very nicely. Its sepals and petals are a beautiful shade of brown in front with white on the back. The front of the lip is rich orchid shade and some have a clear yellow throat and in the rear part of the tube. This cross is very free flowering—the first ones bloomed 28 months from seed. Strong plants in 4-inch pots to flower this winter.	4"	7.50
<b>CYCNOCHES CHLOROCHILON (Species from Panama)</b>	This is the famous "Swan Orchid" so named because of its resemblance to a Swan. The blooms are produced in clusters of 5" flowers with chartreuse sepals and petals, and have a beautiful lip which is white like the back of a Swan. The Swan's head is formed by the column. Flowering Season is Fall and early Winter.	3 1/2" 4" 4 1/2" 5"	2.50 3.50 5.00 7.50

## VANDAS

273	<b>VANDA PRINZES BEATRIX (V. Coerulea X V. Agnes Joachim)</b> A semi-terete type of Vanda that will thrive in a well-lighted greenhouse or out-of-doors in Florida. Color should range from lavender into shades of blue. Nice plants 12-18" tall.	5"	7.50
V-3	<b>V. GILBERT TRIBOULET X V. TATZERI</b> Very vigorous little seedlings of two popular hybrids. Color of flowers should range from Rose to Blue.	2 1/2"	2.50
J-7	<b>VANDA SUAVIS "Var. Broadview" X V. TRICOLOR</b> Very strong growing plants that produce good spikes of flowers in the spring months, Color is usually creamy white with Maroon spots. Five to seven pairs of leaves	5 1/2"	7.50
27	<b>V. TATZERI X V. HERZIANA</b> A very free flowering hybrid with a considerable variation in color from tan into blue shades.	2 1/2"	2.00
999	<b>V. LYNN OTA (V. Henrietta HO X V. Sanderiana)</b> Fawn colored flowers, upper half with maroon spots, lower half colored with heavy purplish-reticulation and shadings almost to solid maroon.	2 1/2"	3.00
407	<b>V. FAIR QUEEN (V. Clara S. Fisher X V. Rothchildiana)</b> Extremely variable — no two plants flower alike. Colors range from rose brown to rich blue. Very large flowers of good quality.	2 1/2"	3.00
323	<b>V. BURGEFFEI (V. Suavis X V. Sanderiana)</b> Large flowers — rose brown. One of the best primary hybrids. 2 to 3 pair of leaves.	5"	5.00



## MATURE PLANTS

CROSS NUMBER		POT SIZE	PRICE PER PLANT
420	<b>C. ST. PETERSBURG (C. Clementine Goldfarb X C. Eucharis)</b> A very fine fall blooming pure white of medium-large size. It has no definite season and flowers twice, sometimes three times a year as each new growth matures.	5" 5½" 6"	20.00 25.00 30.00
424	<b>LC. LOUELLA PARSONS (LC. Jane Dane X C. Gigas "F. M. B.")</b> A very remarkable free flowering white with colored lip. The bloom are quite large and have paper white sepals and petals. Most of them flower in May and June here in Florida with sometimes secondary growths flowering in the late fall.	5" 6" 7"	15.00 20.00 25.00
425	<b>LC. GEORGE E. BALDWIN (C. Enid X LC. Princess Margaret #2)</b> One of the finest hybrids ever raised. A very free producer of large well shaped bloom. Here in Florida this hybrid flowers nearly all the year round, but is predominately a late spring bloomer, with a big share of its bloom in May and June and a secondary crop in September. Large specimen plants in 7" to 9" pots available at \$35.00 to \$50.00 each.	5" 5½" 6"	15.00 20.00 25.00
426	<b>C. FLORENCE PATTERSON (C. Clementine Goldfarb X C. Rita Sladden)</b> A very strong growing and free blooming pure white that flowers several times a year on each new growth just as soon as it is produced. Flowers are of excellent substance. Similar to C. St. Petersburg in most respects except a little larger plant and larger flowers.	5" 5½" 6"	20.00 25.00 30.00
428	<b>LC. ALTEN (Lc. Altesse X C. Enid)</b> The flowers are extremely large in size and very beautifully colored, with rich lavender petals and very frilly dark lip usually beautifully marked with yellow. Texture is excellent and season is winter and variable. Large showy plants that usually make 4 - 6 bloom per spike.	5" 6" 7"	20.00 30.00 40.00
464	<b>LC. ARTHUR E. MILES (Lc. Sagana "Var. Easter X C. Mossiae "R. E. P.")</b> Good producer of extremely large flowers that are rich in lavender color. Nice heavy texture and dark wide lip. Season is April, May and June.	5" 6" 7" 8"	15.00 20.00 25.00 30.00
482	<b>C. OLD FORESTER (C. Enid X C. Charybdis)</b> This magnificent hybrid should be in every collection. Its flowers are extremely large wide sepals and petals, and are very rich lavender with a velvety deep purple lip. These plants are very large and strong growers. (Only a limited number of plants are available.)	6" 7" 8"	20.00 25.00 30.00
545	<b>CATTLEYA ALESIA ALBA (C Mossiae "Reineckiana" (Young's Var.) X C Dionysious Alba)</b> A very free blooming hybrid somewhat like an improved C Enid Alba with more tendency for a solid lip and better texture. Season in winter and variable.	5" 6"	15.00 20.00
551	<b>C. CATHERINE PATTERSON (C. Enid Alba (XXXX) Best X C. Mrs Frederick Knollys Alba)</b> Both parents are extremely large white flowers with very fine colored lips, and season is assured to be winter and early spring. The scarcity of good white colored lip in this period makes this a very valuable hybrid in any collection.	5" 6"	15.00 20.00
575	<b>LC. ERNIE PYLE (Lc. Altesse X C. Mossiae "R. E. P.")</b> A very fine hybrid for the Easter season. Flowers are nicely shaped and bourne in good spikes of 3 to 5 flowers.	5" 5½" 6"	15.00 20.00 25.00



# FANCY EXHIBITION STOCK

Because of continued demands, we are offering this new list of Exhibition Plants for sale as part of our Catalog. Our previous lists are completely sold out. Many of the following have been used as parent stock by leading Orchid growers. These are offered on a first-come, first-served basis.

CROSS NUMBER		POT SIZE	PRICE PER PLANT
1087	<b>C. BOW BELLS (C. Edithae X C. Suzanne Hye)</b> Little introduction is needed for this world famous hybrid—pure white—variable season	5 bulbs 5" Pot	50.00
1088	<b>LC. DELORIS ZIEGFELD NO. 2 "Var. Majestic" (Lc. Princess Margaret X C. R. Cadwalder)</b> Exceptionally nice large flowers of rich lavender. Lip is deep purple with yellow eyes. Strong grower	4 bulbs 5½" Pot	55.00
1089	<b>C. EDITHAE NO. 1 (C. Suzanne Hye X C. Trianae Alba)</b> A nice example of a fine pure white with large lip and yellow throat. Spring.	5 bulbs 5" Pot	25.00
1090	<b>C. BARBARA DANE (C. Labiata X C. Phoebe Snow)</b> Very fine pure white. Heavy texture. Blooms in fall	4 bulbs 5" Pot	40.00
1091	<b>LC. ALTESSE "Dark Late Variety" (LC Britannia X C. Remy Cholett)</b> Parent of our #105. A very nice lavender of good shape and color.	5 small bulbs 5" Pot	50.00
1092	<b>LC. WALTER WINCHELL "Variety Goliath" (C. Tappan X LC. Dupresan)</b> This variety produces huge flowers of 8 to 9" across. Very rich deep orchid with beautiful dark purple lip marked with yellow. Winter.	6 bulbs 5½" Pot	50.00
1093	<b>SLC. ESTELLE JEWEL (SLC Radians X C. Trianae Alba)</b> One of the best sophronitis hybrids. Very deep fuchsia color	4 bulbs 4½" Pot	45.00
1094	<b>C. TRIANAE "Variety A. C. Burrage"</b> One of the finest C. Trianae in existence. Reputed by most growers to be identical to C. Trianae "Var. The President. Very fine shaped flowers of good rich lavender and extremely heavy texture. December	3 strong bulbs 5" Pot	55.00
1095	<b>LC. DELORIS ZIEGFELD ALBA "Var. Elinor Small" (C. R. Cadwalder X Lc. Princess Margaret)</b> A truly beautiful flower. Its broad white petals set off the deep maroon-purple lip with yellow eyes to perfection. Strong grower.	4 bulbs 6" Pot	125.00
1096	<b>C. ST. PETERSBURG "Var. Pinellas Park" (C. Clementine Goldfarb "Osmer's Var. X C. Eucharis)</b> Large pure white flowers with light yellow throat. Heavy texture and good form. Variable blooming season	6 bulbs 5" Pot	55.00
1097	<b>C. SARA COHN (C. Robert H. Jewell X C. Dowiana Aurea)</b> Deep yellow sepals and petals with red lip. This fine yellow hybrid has never had an imperfect bloom, and never fails to flower in the late spring, usually June.	3 bulbs 4½" Pot	40.00



CROSS NUMBER		POT SIZE	PRICE PER PLANT
1098	<b>LC. VALLANDINA "Var. Royalette"</b> (Lc Profusion X C. Dinah) Good production of rich lavender flowers with dark lip and yellow throat. Blooms twice a year with extra heavy texture flowers that last 4 to 6 weeks on the plant.	5 bulbs 5½" Pot	50.00
1099	<b>LC BRANFORD</b> (Lc. S. J. Bracey XC. Maggie Raphael Alba) A very nice flower of contrasting chartreuse sepals and petals with solid red lip. Fall.	5 bulbs 6" Pot	45.00
1100	<b>LC. WALTER WINCHELL "Var. Elvena"</b> (C. Tappan X Lc. Dupresan) A prize winner. This plant won first prize at one of our recent Florida West Coast Orchid Shows. Rich colored petals on deep lip with a very bright yellow throat.	6 bulbs 6" Pot	95.00
1101	<b>BLC GOLDEN MYTH</b> (Lc. Golden Gleam X Blc. Mithra) Very pretty small flowers of a creamy yellow color.	6 bulbs 5" Pot	35.00
1102	<b>LC. WALTER WINCHELL, A. M., A. O. S.</b> (C. Tappan X Lc Dupresan) Fine wide sepals and petals having a beautifully marked lip. Color is very rich lavender with dark showy lip.	5 small bulbs 5" Pot	45.00
1103	<b>BLC. CALIGULA "Var. Excelsia"</b> (Bc. Cliftoni X Callistoglossa) Very wide sepals and petals of rich lavender. Wide dark lip with fringe. Early spring	5 bulbs 5" Pot	45.00
1104	<b>LC. PRINCESS MARGARET #2</b> (Lc. Profusion X C. Clotho) A division of the very same parent used by Patterson to produce LC. George E. Baldwin and many other fancy hybrids of prize winning qualities. Exceptionally large dark flowers of fine shape and texture. Variable, usually twice a year.	3 bulbs 5" Pot	95.00
1105	<b>LC. GEORGE E. BALDWIN "Var. Christmas"</b> (E. Enid X Lc. Princess Margaret) A division of the finest LC. George E Baldwin that we have. Named "Var. Christmas" because it rarely fails to bloom during late December, as well as during May or June, when the rest are at their peak. Size, shape and texture are superb.	5 strong bulbs	50.00
1106	<b>C. MOSSIAE "Variety Oliver Lines"</b> A fine dark C. Mossiae that has proven itself many times as a stud plant. One of the finest in existence.	4 bulbs 5" Pot	45.00
1107	<b>BC. IMPERIAL</b> (Bc. Imperialis X C. Hardiana) Superb flowers of nice shape and fine lavender color. The lip is large and marked with a rich yellow throat. Early spring. Established Back Bulb Division.	6 bulbs 6" Pot	30.00
1108	<b>C. CLEMENTINE GOLDFARB "Osmer's Var."</b> (C. Cybelle Alba X C. Snowdon) Very nice pure white—strong grower and excellent breeder. The parent of many fine whites, including the famous "St. Petersburg". Flowers in fall.	6 bulbs 6½" Pot	55.00
1109	<b>LC. FLORENCE PICKARD "Var. Imperial Majesty"</b> (Lc. Jane Dane X Lc. Britannia Alba) Excellent producer of large flowers. Pure white sepals and petals with large deep purple lip and yellow throat. Flowers intermittently from June through till mid-winter.	4 bulbs 6" Pot	45.00



CROSS NUMBER		POT SIZE	PRICE PER PLANT
1110	<b>C. ENID "Variety Orchidhaven" (C. Mossiae X C. Gigas)</b> Probably the finest C. Enid in existence. Proven many times with hybrids such as LC. George E. Baldwin, etc. Rich lavender—very large and fine.	4 bulbs 5" Pot	100.00
1111	<b>LC. GEORGE E. BALDWIN (Selected Variety) (C. Enid X Lc. Princess Margaret #2)</b> A beautiful example of a well grown specimen plant. Huge leaves and bulbs, excellent variety and color.-----	12 large bulbs 9" Pot	65.00
1112	<b>C. SKINNERII ALBA (Rare Species from Costa Rica)</b> A very beautiful type of this species with glistening pure white sepals and petals. Only a tiny, pinkish lavender touch up in the throat. Rare. Flowers in March.	5 bulbs 5" Pot	35.00
1113	<b>C. EDITHAE "Variety White Empress" F. C. C. (C. Suzanne Hye X C. Trianae Alba)</b> Definitely one of the strongest growing and finest producing white stud plants in the world. The shape is beyond reproach, and there is just enough yellow in the throat to set off the pure whiteness of the sepals and petals. Winter.	bulbs 5 1/2" Pot	125.00
1114	<b>LC. ALTEN "Variety Disston" (Lc. Altessa X C. Enid)</b> A fine example of a huge plant that makes huge flowers. Wide sepals and petals of rich lavender. Large lip with bright yellow eyes.	8 bulbs 6 1/2" Pot	55.00
1115	<b>LC. LILY PONS (Lc. Canhamiana Alba X C. Priscilla Alba)</b> Large heavy textured white sepals and petals of good proportions and a rich dark purple lip. The tips of the petals have a beautiful purple blush that enhances the whole flower.	6 bulbs 6" Pot	35.00
1116	<b>LC. GEORGE E. BALDWIN (Selected Variety) (C. Enid X L c. Princess Margaret #2)</b> Another example of a beautiful specimen plant. Excellent variety.	11 large bulbs 8" Pot	50.00
1117	<b>C. TRIANAE "Variety E. J. Small"</b> Very choice flowers of heavy texture, rich color, large size, and quality that rank with the best in the world. Strong grower and free producer during February and March.	5 bulbs 7" Pot	40.00
1118	<b>C. ETHEL BISHOP (C. Barbars Dane X C. S. E. Endicott)</b> A beautiful pure white of the Bow Belle type. Very heavy texture and nice shape. Variable season.	5 small bulbs 5" Pot	35.00



STURDY LONG LASTING CALIFORNIA REDWOOD

## BASKETS

6" .....	\$1.25
8" .....	1.50
10" .....	1.75
12" .....	2.00

A very practical and attractive way to grow your orchids



## SAFETY POT HANGERS

Made of sturdy No. 10 gauge galvanized steel wire  
Hangers made with **safety lip**

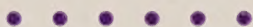
Double 22" long — 3 for \$1.00 — \$25.00 per 100

Minimum shipment of above items must total \$5.00. Prices F.O.B. St. Petersburg and subject to change without notice.

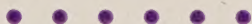
(Florida customers add 3% Sales Tax.)



## CONDITION OF SALE



1. Orders will be filled in the order they are received.
2. We do not make a packing charge, but cannot accept orders for shipment of less than \$5.00.
3. All orders are F.O.B. St. Petersburg and unless otherwise advised, shipment will be made via Railway Express, collect. However, for faster service to distant points and in cold weather, we recommend Air Express (or Air Freight on large orders). All shipments to Hawaii are made via Air Mail Parcel Post. In order to save time to this area, our firm will advance the necessary postage, but in return ask reimbursement of these charges promptly upon receipt of bill for same.
4. Our firm has been properly authorized to handle shipments to Hawaii, but first the customer must forward with his order his permit which he must obtain from the Board of Commissioners of Agriculture and Forestry, Honolulu.
5. Unless your credit has been established with us, kindly enclose check, money order, or bank draft to cover payment of your order in full.
6. We prefer to ship all large plants and larger seedlings out of pot to lower the cost of shipping, particularly when the distance is great. Unless requested to ship plants in pots, all large plants will be carefully removed and packed for safe arrival in light weight cardboard shipping containers.
7. Claims for damaged shipments must be filed immediately with the carrier by the consignee. We make every effort to pack carefully, and our responsibility ends when the shipment is accepted by the carrier.
8. All plants in this catalog are offered subject to prior sale and we reserve the right to substitute a similar cross of equal or better value unless a choice is given or you specify "no substitutions".



## EARL J. SMALL ORCHIDS

St. Petersburg, Florida

*Mailing address*

P. O. Box 576 - 22nd St. Station

*Office and Greenhouse Range*

49th Street at 70th Ave. North

*Potted Plant Range*

566 - 49th Street South



We are prepared to make shipments the year around in all types of weather. We have a special padded insulated wrapper for use in the winter where shipments must go into cold climates. In addition to this, we check weather reports and do not ship when extremely bad weather conditions exist at the destination. Fast transportation by air makes us nearer than ever before from the most distant parts of the world; the danger of injury of plants during transportation is practically non-existent. We appreciate your patronage and wish you success in your ORCHID GROWING.

We'll be glad to have you see . . .

ORCHIDS  
FOR  
ALL

by

EARL J. SMALL

49th St. at 70th Ave. North

